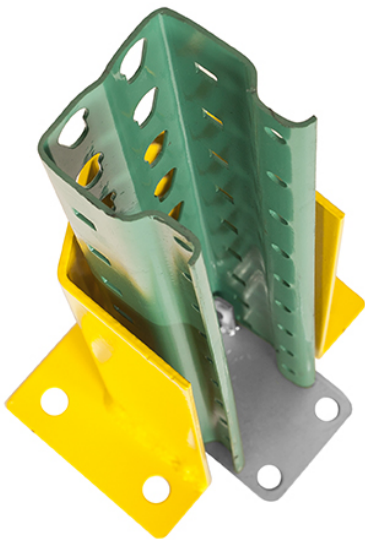


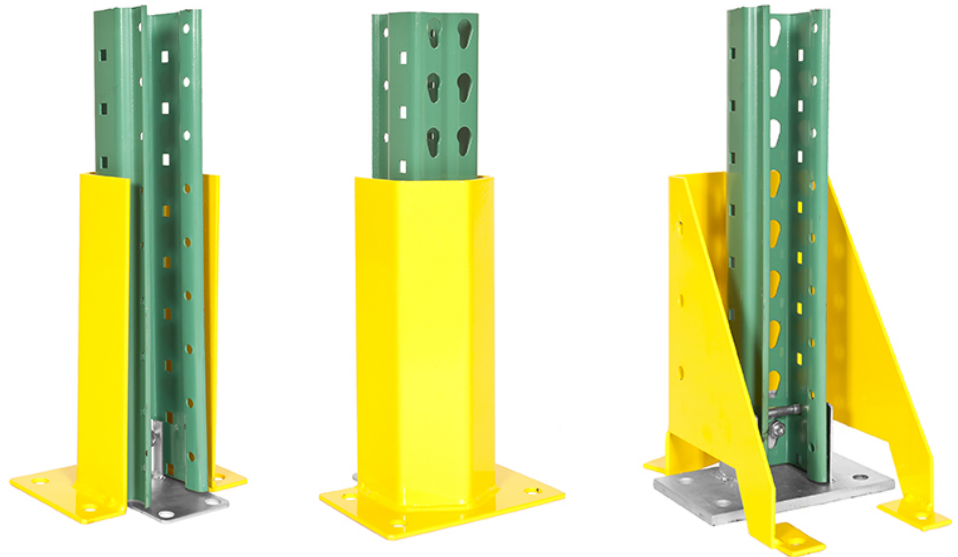
Spectrum Column Protectors

Sizes & Dimensions

Description	Size	Specs	Weight	Color
Column Protector	12" Floor	Standard 3 x 4	7.5	Yellow
Column Protector	16" Floor	Standard 3 x 4	9.9	Yellow
Column Protector	18" Floor	Standard 3 x 4	9.9	Yellow
Column Protector	24" Floor	Floor Mount	13.45	Yellow
Column Protector	12" Floor Seismic	Use with Seismic 5 x 8	14.1	Yellow
Column Protector	16" Floor Seismic	Use with Seismic 5 x 8	18.6	Yellow
Column Protector	24" Floor Seismic	Use with Seismic 5 x 8	27.5	Yellow
Column Protector	12" Bolt-on	Bolt-on type	4.8	Yellow
Column Protector	18" Bolt-on	Bolt-on type	7.1	Yellow
Column Protector	24" Bolt-on	Standard 3 x 4	13.45	Yellow
Column Protector	End of Aisle Protector - 42" Left		61.17	Yellow
Column Protector	End of Aisle Protector - 42" Right		61.17	Yellow
Column Protector	End of Aisle Protector - 24" - Extension	6" x 4" angle, 24"	24.58	Yellow



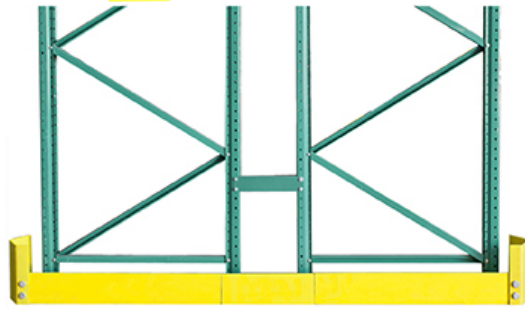
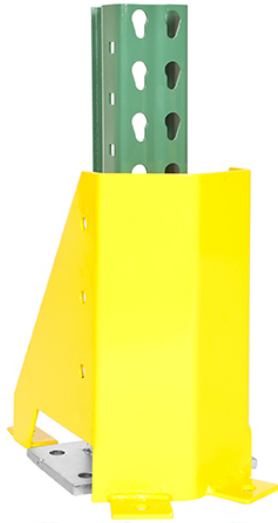
Standard Column Protector (Overhead, Rear and Front View)



Seismic Column Protector
(Rear View)



Seismic Column Protector
(Overhead and Front View)



End of Row Protector